

ESPULSORE SIMILE DIN/ISO 6751/HSS

HSS EJECTOR LIKE DIN/ISO 6751

CODICE / Item no.

A194

Materiale: Acciaio super rapido 1.3343

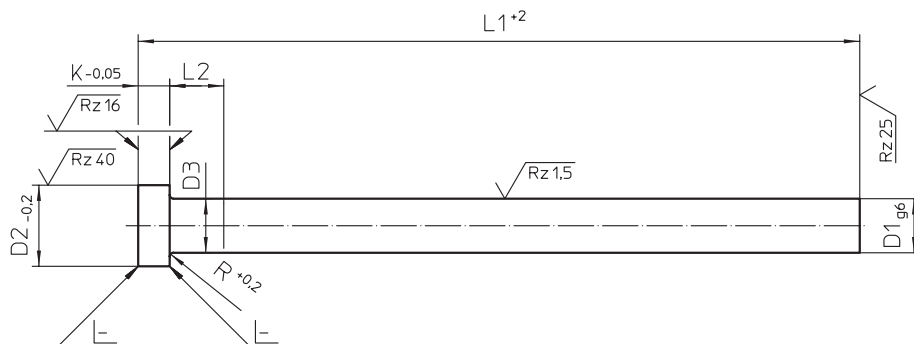
Material: High speed steel

Esecuzione: Gambo rettificato e lappato, testa riscalcata a caldo
Execution: Stem ground and lapped, head modeled hot

Durezza: Gambo 59...61 HRC
Fino a ca. 20-30 mm sotto testa 38...45 HRC

Hardness: Stem 59 ... 61 HRC
Up to approx. 20-30 mm below the head 38 ... 45 HRC

FORMA AWS/HSS



ESEMPIO DI ORDINE:

10 PEZZI A194 2,2 x 160

ORDERING - EXAMPLE:

10 PIECES A194 2,2 x 160

diametro	d ₁	d ₂	d ₃	l ₂	k ₁	r	l ₁₊₂					
	-0,1	-0,2			-0,05	+0,2	100	125	160	200	250	315
	1,5	3	d ₁ +0,03	<10	1,5	0,2	♦		♦	♦		
	2,0	4					♦	♦	♦	♦		
	2,2						♦	♦				
	2,5	5			♦		♦	♦	♦			
	3,0	6			♦	♦	♦	♦	♦		♦	
	3,2						♦	♦				
	3,5				7	♦		♦	♦	♦	♦	
	4,0	8			♦		♦	♦	♦	♦	♦	
	4,2						♦	♦	♦			
	4,5				10	♦		♦	♦	♦	♦	
	5,0									♦		
	5,2											
	5,5											
	6,0	12	d ₁ +0,04		5	0,5			♦	♦	♦	♦
	8,0	14							♦	♦	♦	♦
	10	16							♦	♦	♦	
	12	18					7	0,8			♦	♦

SI FORNISCONO ESPULSORI A LAMELLA IN ACCIAIO PER LAVORAZIONE A CALDO.
YOU PROVIDE EJECTOR BLADE STEEL FOR HOT WORK.