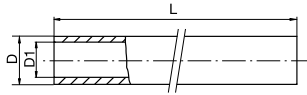


TUBI

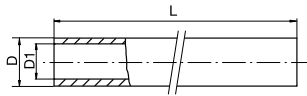


CODICE / Item no.

TFW..

Material EPDM

No.	D1	D	L	Colour	Pressure	Ref. TFK	Ref. TFB	VPE
TFW10B	10/9	17,5	50 m	BLU	max. 15 bar	TFK1810	TFB1016	1
TFW10R	10/9	17,5	50 m	ROSSO	max. 15 bar	TFK1810	TFB1016	1
TFW10S	10/9	17,5	50 m	NERO	max. 15 bar	TFK1810	TFB1016	1
TFW13B	13	21	50 m	BLU	max. 15 bar	TFK2313	TFB1318	1
TFW13R	13	21	50 m	ROSSO	max. 15 bar	TFK2313	TFB1318	1
TFW13S	13	21	50 m	NERO	max. 15 bar	TFK2313	TFB1318	1
TFW19S	19	27	30 m	NERO	max. 15 bar	TFK2919	TFB2232	1

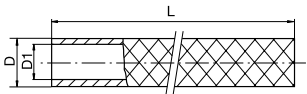


CODICE / Item no.

TFO..

Material NBR

No.	D1	D	L	Colour	Pressure	Ref. TFK	Ref. TFB	VPE
TFO10S	10/9	17,5	50 m	NERO	max. 15 bar	TFK1810	TFB1016	1
TFO13S	13	21	50 m	NERO	max. 15 bar	TFK2313	TFB1318	1

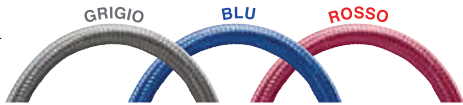
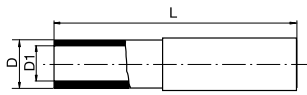


CODICE / Item no.

TFP..

Material PVC

No.	D1	D	L	Colour	Pressure	Ref. TFK	Ref. TFB	VPE
TFP10T	10/9	16	30/50 m	X	max. 15 bar	TFK1610	TFB1016	1
TFP10B	10/9	16	30/50 m	BLU	max. 15 bar	TFK1610	TFB1016	1
TFP10R	10/9	16	30/50 m	ROSSO	max. 15 bar	TFK1610	TFB1016	1
TFP13T	13	21	30/50 m	X	max. 15 bar	TFK1913	TFB1318	1
TFP13B	13	21	30/50 m	BLU	max. 15 bar	TFK1913	TFB1318	1
TFP13R	13	21	30/50 m	ROSSO	max. 15 bar	TFK1913	TFB1318	1
TFP19T	19	27	30/50 m	X	max. 15 bar	TFK2919	TFB2232	1

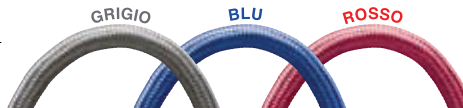
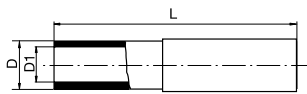


CODICE / Item no.

TFS..

Material SILICONE

No.	D1	D	L	Colour	Pressure	Ref. TFK	Ref. TFB	VPE
TFS10	10/9	15	25 m	GRIGIO	max. 15 bar	TFK1510	TFB1016	1
TFS10B	10/9	15	25 m	BLU	max. 15 bar	TFK1510	TFB1016	1
TFS10R	10/9	15	25 m	ROSSO	max. 15 bar	TFK1510	TFB1016	1
TFS13	13	19	25 m	GRIGIO	max. 15 bar	TFK1913	TFB1318	1
TFS13B	13	19	25 m	BLU	max. 15 bar	TFK1913	TFB1318	1
TFS13R	13	19	25 m	ROSSO	max. 15 bar	TFK1913	TFB1318	1



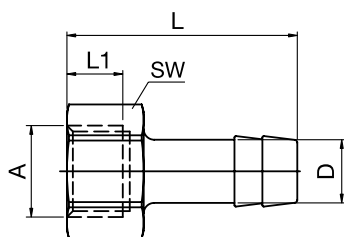
CODICE / Item no.

TFKM..

Material FKM

No.	D1	D	L	Colour	Pressure	Ref. TFK	Ref. TFB	VPE
TFKM10	10/9	15	25 m	GRIGIO	max. 15 bar	TFK1510	TFB1016	1
TFKM10B	10/9	15	25 m	BLU	max. 15 bar	TFK1510	TFB1016	1
TFKM10R	10/9	15	25 m	ROSSO	max. 15 bar	TFK1510	TFB1016	1
TFKM13	13	19	25 m	GRIGIO	max. 15 bar	TFK1913	TFB1318	1
TFKM13B	13	19	25 m	BLU	max. 15 bar	TFK1913	TFB1318	1
TFKM13R	13	19	25 m	ROSSO	max. 15 bar	TFK1913	TFB1318	1

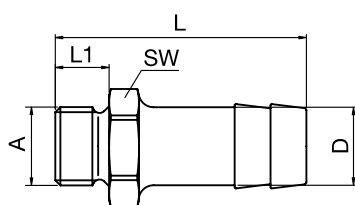
TUBI



CODICE / Item no.

TFI..

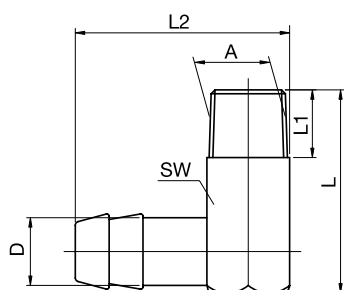
No.	A	D	L	L1	SW	VPE
TFI1/810	1/8" BSP	10	33	8	14	25
TFI1/410	1/4" BSP	10	33	8	17	25
TFIM1410	M14x1,5	10	32	10	17	10
TFI1/413	1/4" BSP	13	39	8	17	25
TFIM1613	M16x1,5	13	40	10,5	22	10
TFI3/813	3/8" BSP	13	40	8	19	25



CODICE / Item no.

TFM..

No.	A	D	L	L1	SW	VPE
TFM810	M8x0,75	10	33,5	7	11	25
TFM1010	M10x1	10	33,5	7	11	25
TFI1/810	1/8" BSP	10	33	7	14	25
TFI1/410	1/4" BSP	10	35	9	17	25
TFM1213	M12x1,5	13	40	9	15	25
TFI1/413	1/4" BSP	13	42	9	17	25
TFM1413	M14x1,5	13	43	10	17	10
TFM1613	M16x1,5	13	40	9	17	10
TF3/813	3/8" BSP	13	42	9	19	25
TFM2419	M24x1,5	19	56	16	27	10
TFI1/219	1/2" BSP	19	54	12	24	10
TF3/419	3/4" BSP	19	60	16	32	10



CODICE / Item no.

TFV..

No.	A	D	L	L1	L2	SW	VPE
TFVM810	M8x0,75	10	27	9	33,5	11	25
TFVM1010	M10x1	10	27	9	28,5	11	25
TFV1/810*	1/8" BSP	10	27	9	28,5	11	25
TFV1/410*	1/4" BSP	10	34	11	40	15	25
TFV1/413*	1/4" BSP	13	34	11	40	15	25
TFVM1413	M14x1,5	13	34	11	40	15	10
TFV3/813*	3/8" BSP	13	35	12	42	17	25
TFVM2419	M24x1,5	19	47	16	58,5	24	10
TFV1/219*	1/2" BSP	19	47	16	58,5	24	10

*NICHELATO
*NICKEL PLATED