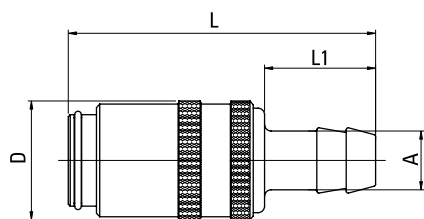


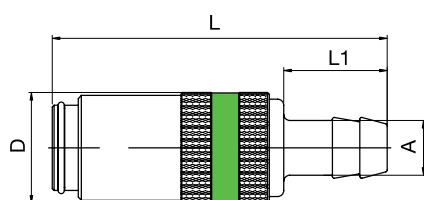
# RACCORDI E INNESTI PER RAFFREDDAMENTO STANDARD EUROPEO



CODICE / Item no.

## TL..

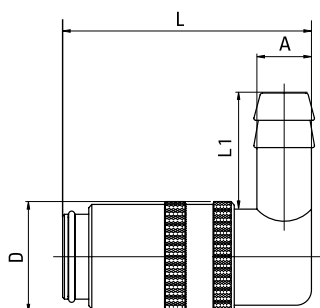
S	SERIES			A	D	L	L1	SW	VPE
6	65	TL6510	TL65100V	10	18	52	22		10
9	90	TL9013	TL90130V	13	23	61,5	25		10
13	20	TL2019	TL20190V	19	32	90	32		5



CODICE / Item no.

## TL..SL

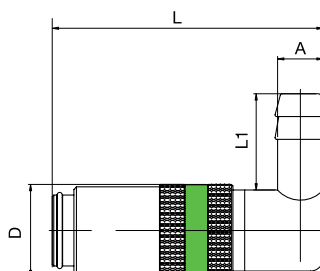
S	SERIES			A	D	L	L1	SW	VPE
6	65	TL6510-SL	TL65100V-SL	10	18	60	22		10
9	90	TL9013-SL	TL90130V-SL	13	24	71	25		10



CODICE / Item no.

## TV../90

S	SERIES			A	D	L	L1	SW	VPE
6	65	TV6510/90	TV6510/900V	10	18	41	22		10
9	90	TV9013/90	TV9013/900V	13	23	51	28,5		10
13	20	TV2019/90	TV2019/900V	19	32	78	32		5

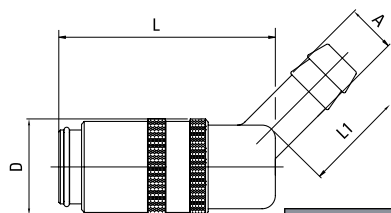


CODICE / Item no.

## TV../90 SL

S	SERIES			A	D	L	L1	SW	VPE
6	65	TV6510/90-SL	TV6510/900V-SL	10	18	53,5	22		10
9	90	TV9013/90-SL	TV9013/900V-SL	13	24	63,5	28,5		10

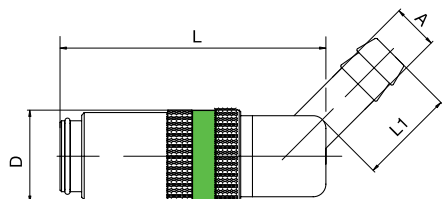
# RACCORDI E INNESTI PER RAFFREDDAMENTO STANDARD EUROPEO



CODICE / Item no.

## TV../45

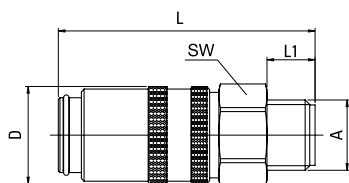
S	SERIES	↔	↔	A	D	L	L1	SW	VPE
6	65	TV6510/45	TV6510/450V	10	18	52	22		10
9	90	TV9013/45	TV9013/450V	13	23	51	25		10
13	20	TV2019/45	TV2019/450V	19	32	78	30		5



CODICE / Item no.

## TV../45 SL

S	SERIES	↔	↔	A	D	L	L1	SW	VPE
6	65	TV6510/45-SL	TV6510/450V-SL	10	18	60	22		10
9	90	TV9013/45-SL	TV9013/450V-SL	13	24	60,5	25		10

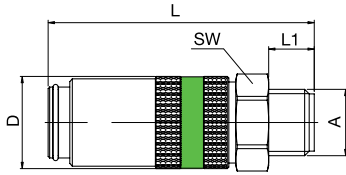


CODICE / Item no.

## TU..

S	SERIES	↔	↔	A	D	L	L1	SW	VPE
6	65	TU65M14	TU65M140V	M14x1,5	18	48	9	17	10
		TU651/4	TU651/40V	G1/4	18	48	9	17	10
		TU653/8	TU653/80V	G3/8	18	48	9	19	10
9	90	TU90M16	TU90M160V	M16x1,5	23	51,5	9	22	10
		TU901/4	TU 901/40V	G1/4	23	51,5	9	22	10
		TU903/8	TU 903/80V	G3/8	23	51,5	9	22	10
		TU901/2	TU901/20V	G1/2	23	54,5	12	22	10
13	20	TU20M24	TU20M240V	M24x1,5	32	78	16	30	5
		TU201/2	TU201/20V	G1/2	32	74	12	30	5
		TU203/4	TU203/40V	G3/4	32	78	16	30	5

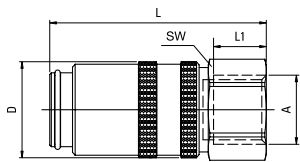
# RACCORDI E INNESTI PER RAFFREDDAMENTO STANDARD EUROPEO



CODICE / Item no.

## TU..SL

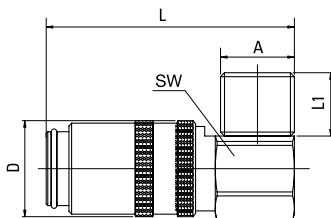
S	SERIES	↻	↔	A	D	L	L1	SW	VPE
⑥	65	TU65M14-SL	TU65M140V-SL	M14x1,5	18	52,5	9	17	10
		TU651/4-SL	TU651/40V-SL	G1/4	18	52,5	9	17	10
		TU653/8-SL	TU653/80V-SL	G3/8	18	52,5	9	19	10
⑨	90	TU90M16-SL	TU90M160V-SL	M16x1,5	24	62	9	22	10
		TU901/4-SL	TU901/40V-SL	G1/4	24	62	9	22	10
		TU903/8-SL	TU903/80V-SL	G3/8	24	62	9	22	10
		TU901/2-SL	TU901/20V-SL	G1/2	24	65	12	22	10



CODICE / Item no.

## TI..

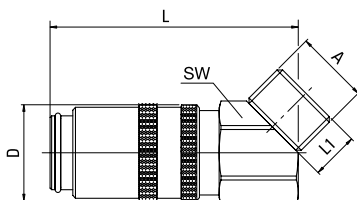
S	SERIES	↻	↔	A	D	L	L1	SW	VPE
⑥	65	TI651/4	TI651/40V	G1/4	18	41	10	17	10
		TI653/8	TI653/80V	G3/8	18	45	10	19	10
⑨	90	TI901/4	TI901/40V	G1/4	23	46,5	10	21	10
		TI903/8	TI903/80V	G3/8	23	46,5	10	21	10
		TI90M16	TI90M160V	M16x1,5	23	46,5	10	21	10



CODICE / Item no.

## TVU../90

S	SERIES	↻	↔	A	D	L	L1	SW	VPE
⑥	65	TVU65M14/90	TVU65M14/900V	M14x1,5	18	47	12	17	10
		TVU651/4/90	TVU651/4/900V	G1/4	18	47	12	17	10
⑨	90	TVU90M16/90	TVU90M16/900V	M16x1,5	23	53,5	12	22	10
⑬	20	TVU20M24/90	TVU20M24/900V	M24x1,5	32	80	18	30	5

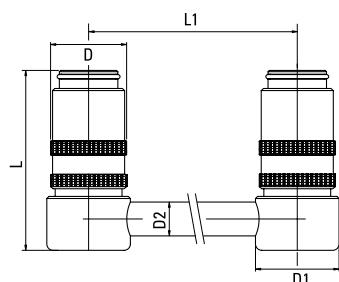


CODICE / Item no.

## TVU../45

S	SERIES	↻	↔	A	D	L	L1	SW	VPE
⑥	65	TVU65M14/45	TVU65M14/450V	M14x1,5	18	47	9	17	10
		TVU651/4/45	TVU651/4/450V	G1/4	18	47	9	17	10
⑨	90	TVU90M16/45	TVU90M16/450V	M16x1,5	23	53,5	9	22	10
⑬	20	TVU20M24/45	TVU20M24/450V	M24x1,5	32	80	18	30	5

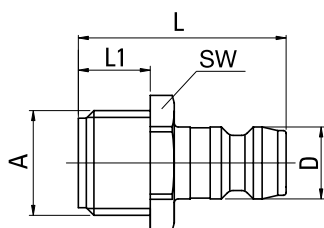
# RACCORDI E INNESTI PER RAFFREDDAMENTO STANDARD EUROPEO



CODICE / Item no.

## TS..

S	SERIES	↔	D	L	D1	D2	L1	VPE
6	65	TS65125	18	43	20	8	125	1
		TS65250	18	43	20	8	250	1
		TS65500	18	43	20	8	500	1
9	90	TS90125	23	53	26	10	125	1
		TS90250	23	53	26	10	250	1
		TS90500	23	53	26	10	500	1
13	20	TS20160	32	80	36	14	160	1
		TS20315	32	80	36	14	315	1
		TS20500	32	80	36	14	500	1



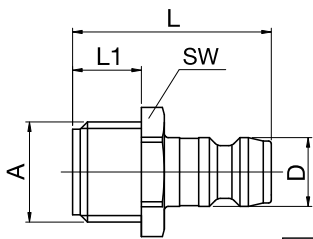
CODICE / Item no.

## TN..

S	SERIES	↔	A	D	L	L1	SW	VPE
6	65	TN65M8	M8x0,75	9	24	7	11	25
		TN65M10	M10x1	9	24	7	11	25
		TN651/8*	G1/8	9	24	7	11	25
		TN65M12	M12x1,5	9	27	10	14	25
		TN65M14	M14x1,5	9	26	9	15	25
		TN65M14V	M14x1,5	9	29	12	15	25
		TN651/4*	G1/4	9	26	9	15	25
		TN651/4V*	G1/4	9	29	12	15	25
		TN653/8*	G3/8	9	30	10	17	25
		TN651/8*	G1/8	13,5	25	8	14	25
9	90	TN90M14	M14x1,5	13,5	26	9	15	25
		TN901/4*	G1/4	13,5	26	9	15	25
		TN901/4V*	G1/4	13,5	31	12	15	25
		TN903/8*	G3/8	13,5	26	9	17	25
		TN903/8V*	G3/8	13,5	30	12	17	25
		TN90M16	M16x1,5	13,5	26	9	17	25
13	20	TN90M16V	M16x1,5	13,5	30	12	17	25
		TN20M24V	M24x1,5	19	51	16	27	10
		TN201/2*	G1/2	19	47	12	22	10
TN203/4V*	TN203/4*	G3/4	19	51	16	27	10	

\*NICHELATO  
\*NICKEL PLATED

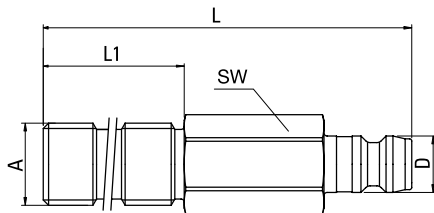
# RACCORDI E INNESTI PER RAFFREDDAMENTO STANDARD EUROPEO



CODICE / Item no.

## TN..INOX

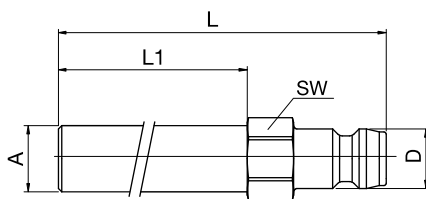
S	SERIES	↔	A	D	L	L1	SW	VPE
⑥	65	TN65M8INOX	M8x0,75	9	24	7	11	25
		TN65M10INOX	M10x1	9	24	7	11	25
		TN651/8INOX	G1/8	9	24	7	11	25
		TN651/4INOX	G1/4	9	26	9	15	25
⑨	90	TN901/4INOX	G1/4	13,5	26	9	15	25
		TN903/8INOX	G3/8	13,5	26	9	17	25



CODICE / Item no.

## TN..100

S	SERIES	↔	A	D	L	L1	SW	VPE
⑥	65	TN651/8/100	G1/8	9	100	60	11	10
		TN651/4/100	G1/4	9	100	60	14	10
⑨	90	TN901/4/100	G1/4	13,5	100	60	14	10
		TN903/8/100	G3/8	13,5	100	60	19	10

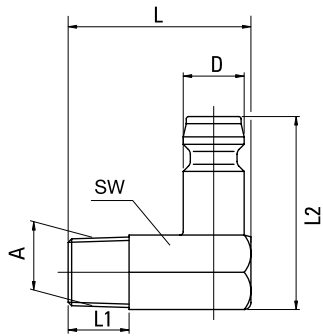


CODICE / Item no.

## TN..

S	SERIES	↔	A	D	L	L1	SW	VPE
⑥	65	TN6508/63	8	9	63	42	9	10
		TN6508/100	8	9	100	79	9	10
		TN6510/120	10	9	120	100	11	10
		TN6510/240	10	9	240	220	11	10
		TN6510/360	10	9	360	340	11	10
⑨	90	TN9014/150	14	13,5	150	125	15	10
		TN9014/300	14	13,5	300	275	15	10
		TN9014/450	14	13,5	450	425	15	10
⑬	20	TN2021/500	21	19	500	465	22	5
		TN2021/800	21	19	800	765	22	5

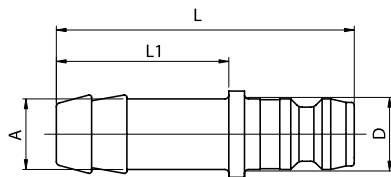
# RACCORDI E INNESTI PER RAFFREDDAMENTO STANDARD EUROPEO



CODICE / Item no.  
**TNV..**

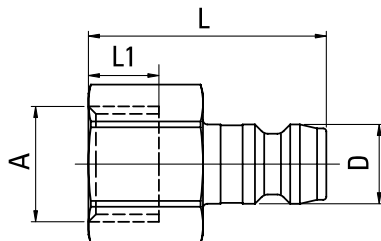
S	SERIES	↔	A	D	L	L1	L2	SW	VPE
6	65	TNV65M8	M8x0,75	9	27	9	28,5	11	25
		TNV65M10	M10x1	9	27	9	28,5	11	25
		TNV651/8*	R1/8	9	27	9	28,5	11	25
		TNV651/4*	R1/4	9	27	9	28,5	11	25
9	90	TNV90M14	M14x1,5	13,5	34	11	32	15	25
		TNV901/4*	R1/4	13,5	34	11	32	15	25
		TNV903/8*	R3/8	13,5	34	11	32	15	25
13	20	TNV20M24	M24x1,5	19	47	16	54	24	5
		TNV201/2*	R1/2	19	47	16	54	24	5

\*NICHELATO  
\*NICKEL PLATED



CODICE / Item no.  
**TN..**

S	SERIES	↔	A	D	L	L1	VPE
6	65	TN6510	10	9	38	22	25
9	90	TN9010	10	13,5	41	25	25
		TN9013	13	13,5	41	25	25
13	20	TN2013	13	19	61	32	5
		TN2019	19	19	61	32	5



CODICE / Item no.  
**TNI..**

S	SERIES	↔	A	D	L	L1	SW	VPE
6	65	TNI651/8	G1/8	9	24	7	11	25
		TNI651/4	G1/4	9	27	8	16	25
9	90	TNI901/4	G1/4	13,5	33	8	16	25